

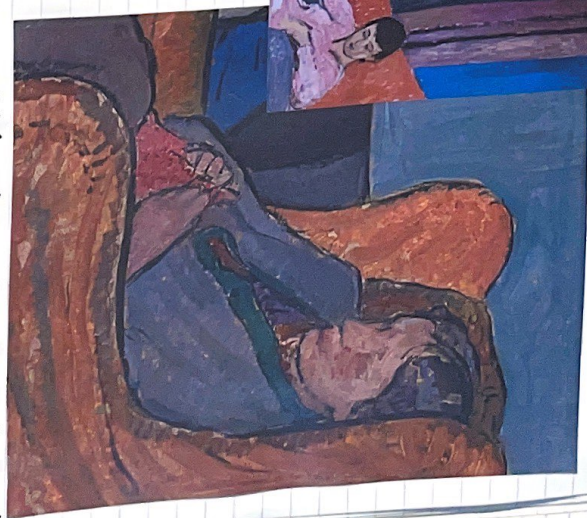
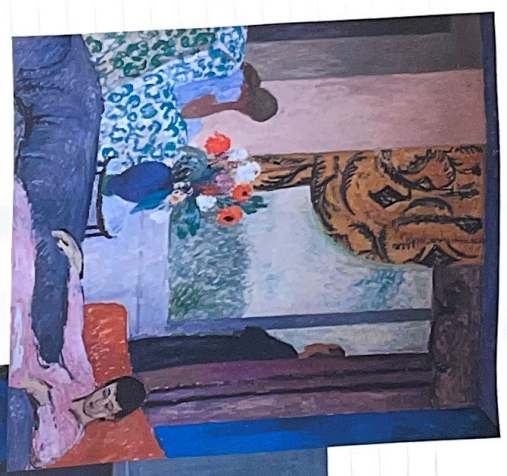
ettel
 vanessa
 allen
 van der
 van gogh chair piece



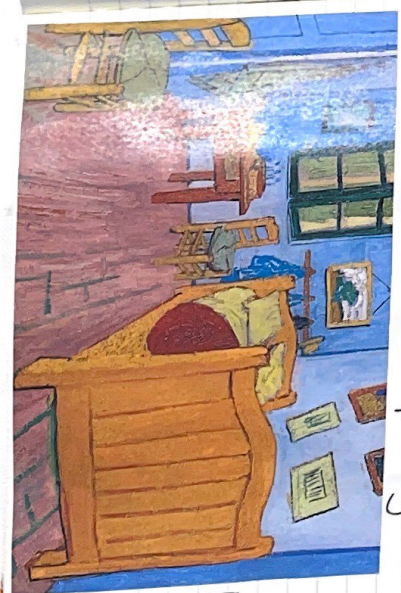
Etta Hall
 still life, interiors
 in portrait hostess in
 10th century



Vanessa Bell
 english painter /
 interior designer



painting of her sister Virginia Woolf



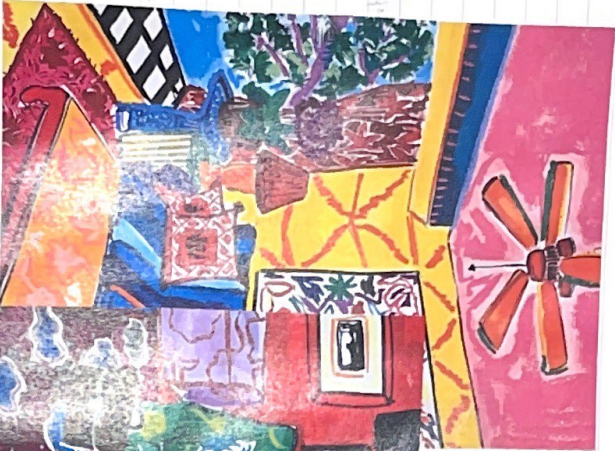
point perspective
 drawing / painting of
 van der van Gogh's
 bedroom



ALIC
EGAN



ROSE KLETA
HARRIS



1946 aging women by
acting / performing typically
masculine behavior



10kyo

MARLEO
NOEL

'Love Hotel'
1994

explains
performance,
video, modeling
stereotypes

agonistic relationship in a fairly complex act of others. It is not a relationship becomes its suspension creates a frontier instead of manipulating and moving across it. After the event, one must be content with reacting to them after the event. It would not be possible for power relations to exist without points of subordination that, by definition, are means of escape. Accordingly, every intensification or extension of power relations intended to wholly suppress these points of subordination can only bring the exercise of power up against its outer limits. It reaches its final term either in a type of action that reduces the other to total impotence (in which case victory over the adversary replaces the exercise of power) or by a confrontation with those whom one governs and their transformation into adversaries. Which is to say, that every strategy of confrontation dreams of becoming a relationship of power and every relationship of power tends, both through its intrinsic course of development and when frontally encountering resistances, to become a win.

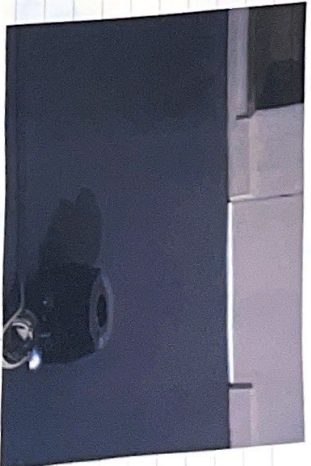
In fact, between a win and there is a reciprocal appeal. At every moment, the

CEAL FLORE
1995

'Door' light
provided under
the door using
device on the ground



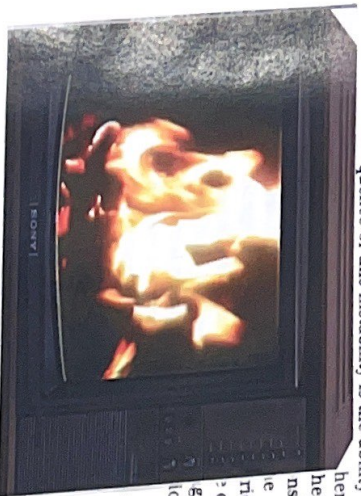
of an
rect,
condi
ment
tion
and
stir
ir



GER VAN ELK

conceptual artist "The Well
shown works" 1969

reversal...
a confrontation between adversaries in society to the putting into operation of mechanisms...
quence of this instability is the ability to decipher the structure of power whose ram-

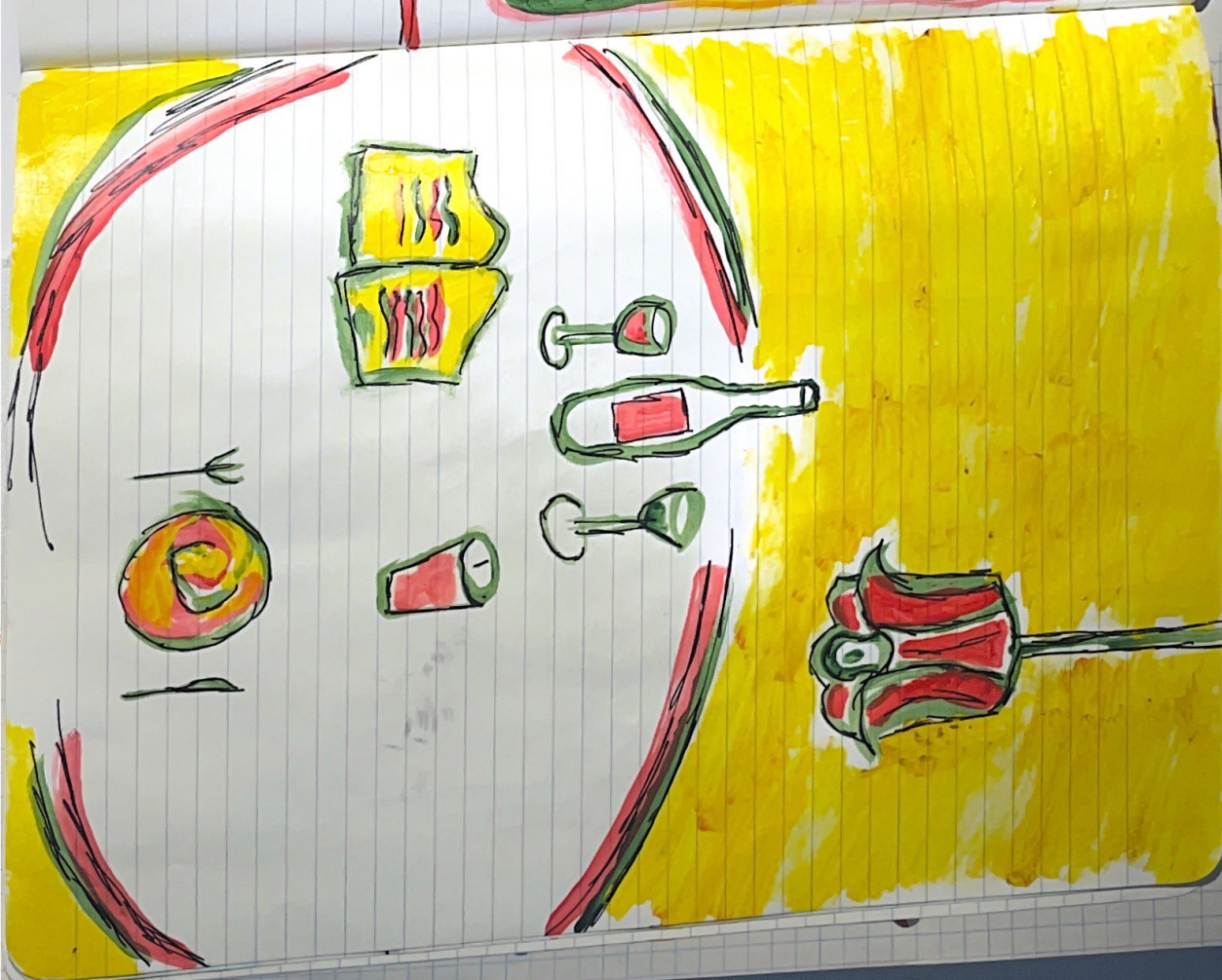
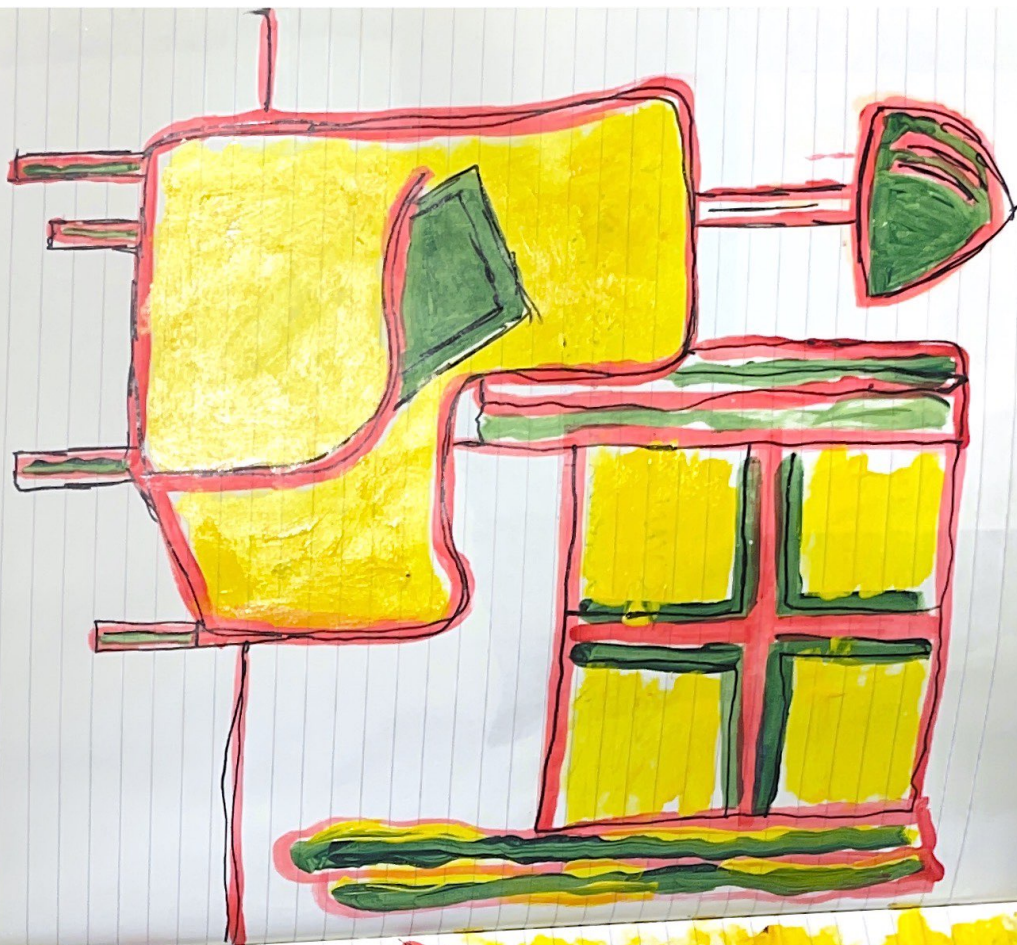


JAN DIBBETS

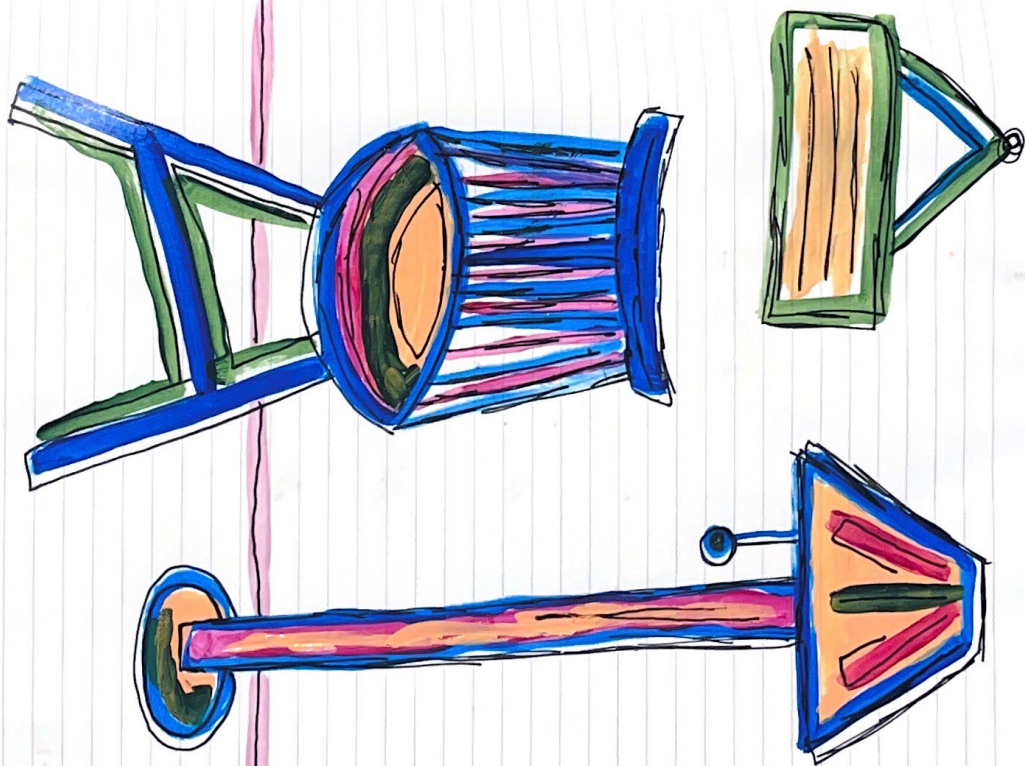
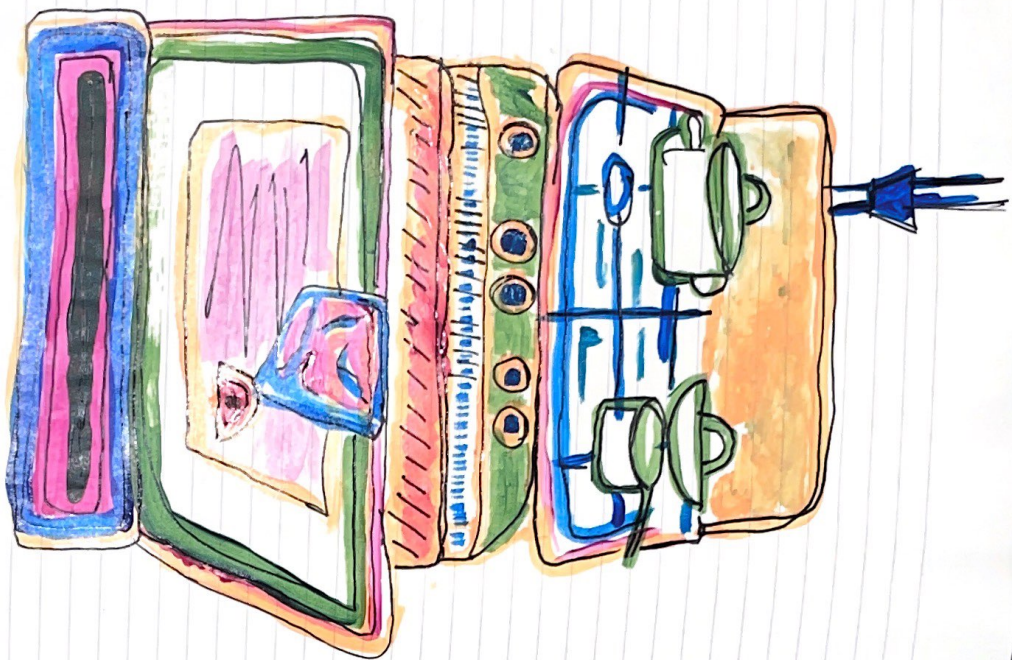
'TV as a fireplace'
68-69

How the has taken over
central role in our lives as
an open fireplace

3
colours



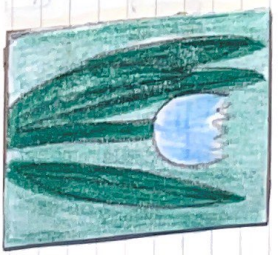
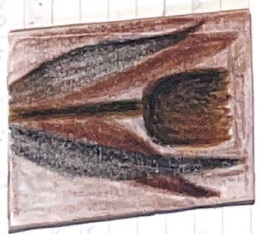
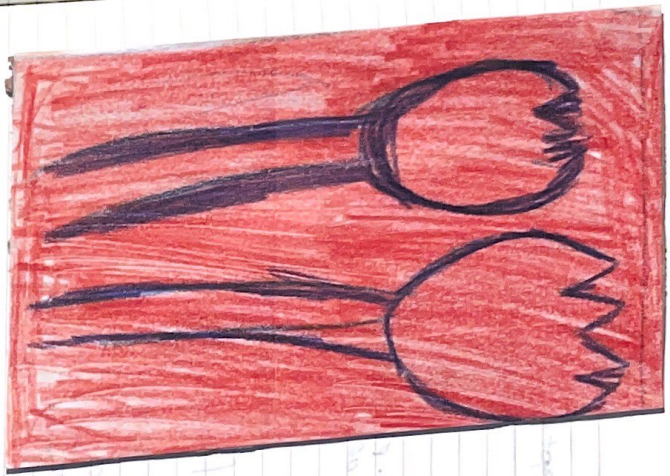
4 colours



18/01

to do:

- print artists (printer broken)
- consider turning painting into animation or sculpture?
- update blog



painting? animation? sculpture?

21/03/2017
21/03/2017
21/03/2017

artists that recreate/adapt domestic items

- Robert Rauschenberg
- Marcel Duchamp "white flight"
- Günther Rambow "white flight"
- Michael Mapes collage of objects

BUILDING A

DOMESTIC

SCENE IN A

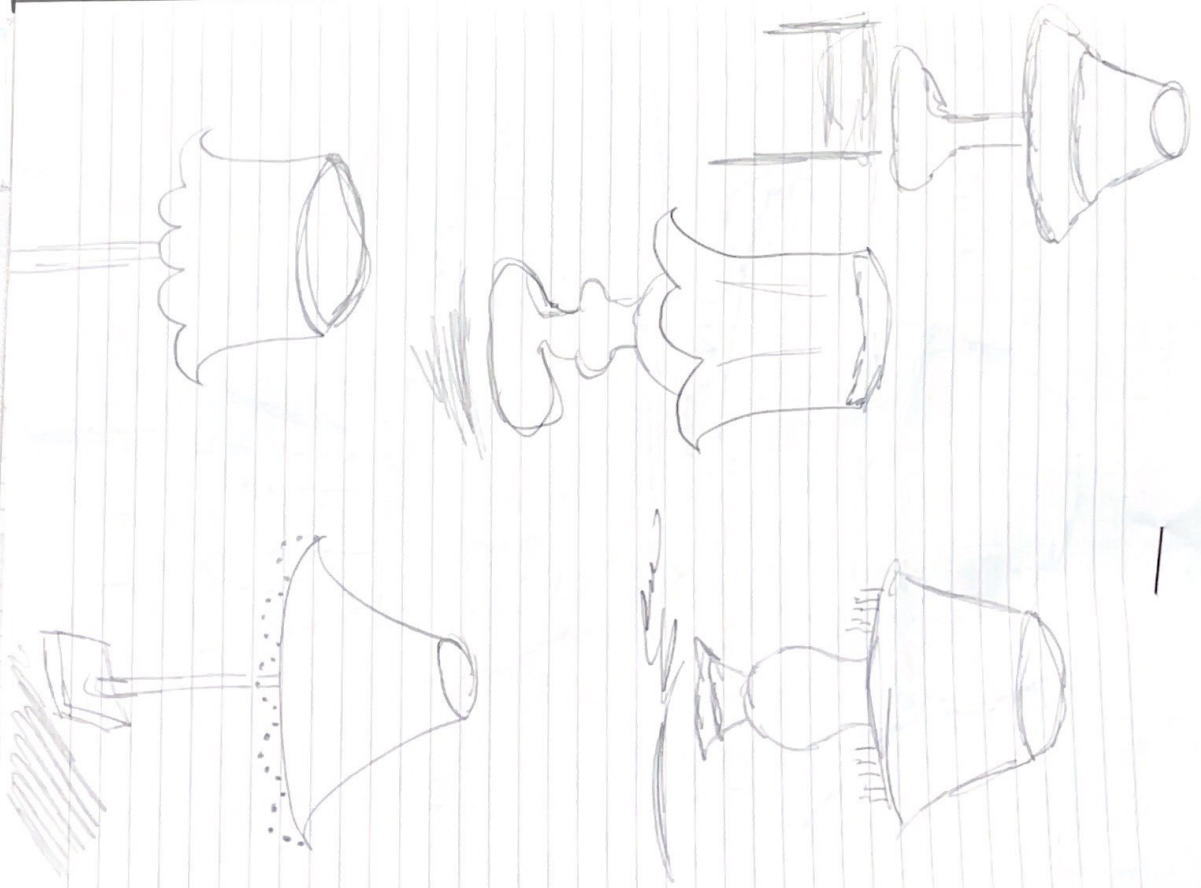
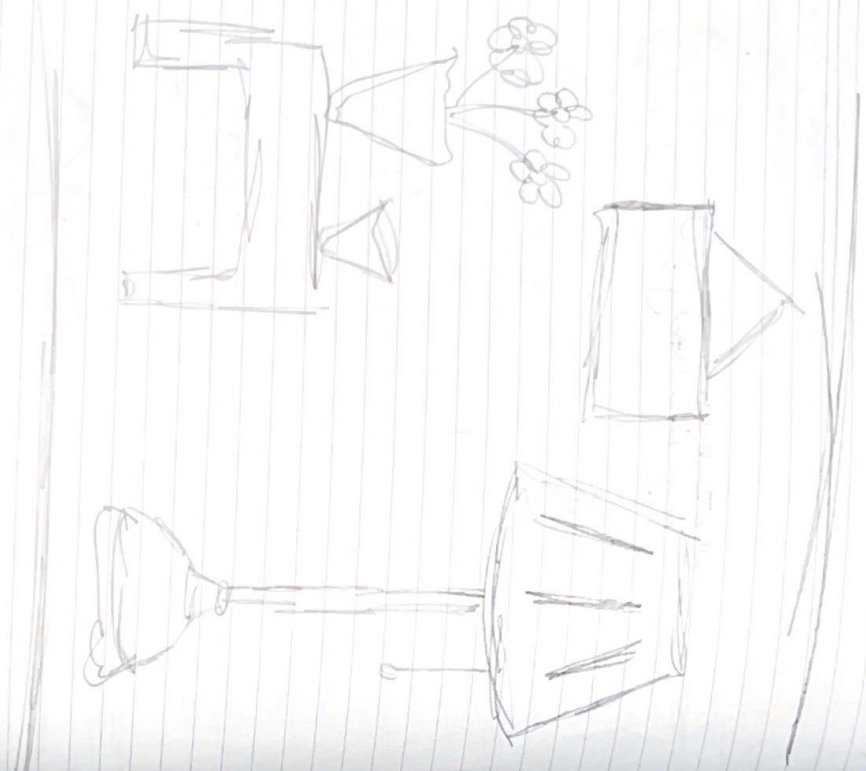
DOMESTIC

OBJECT?

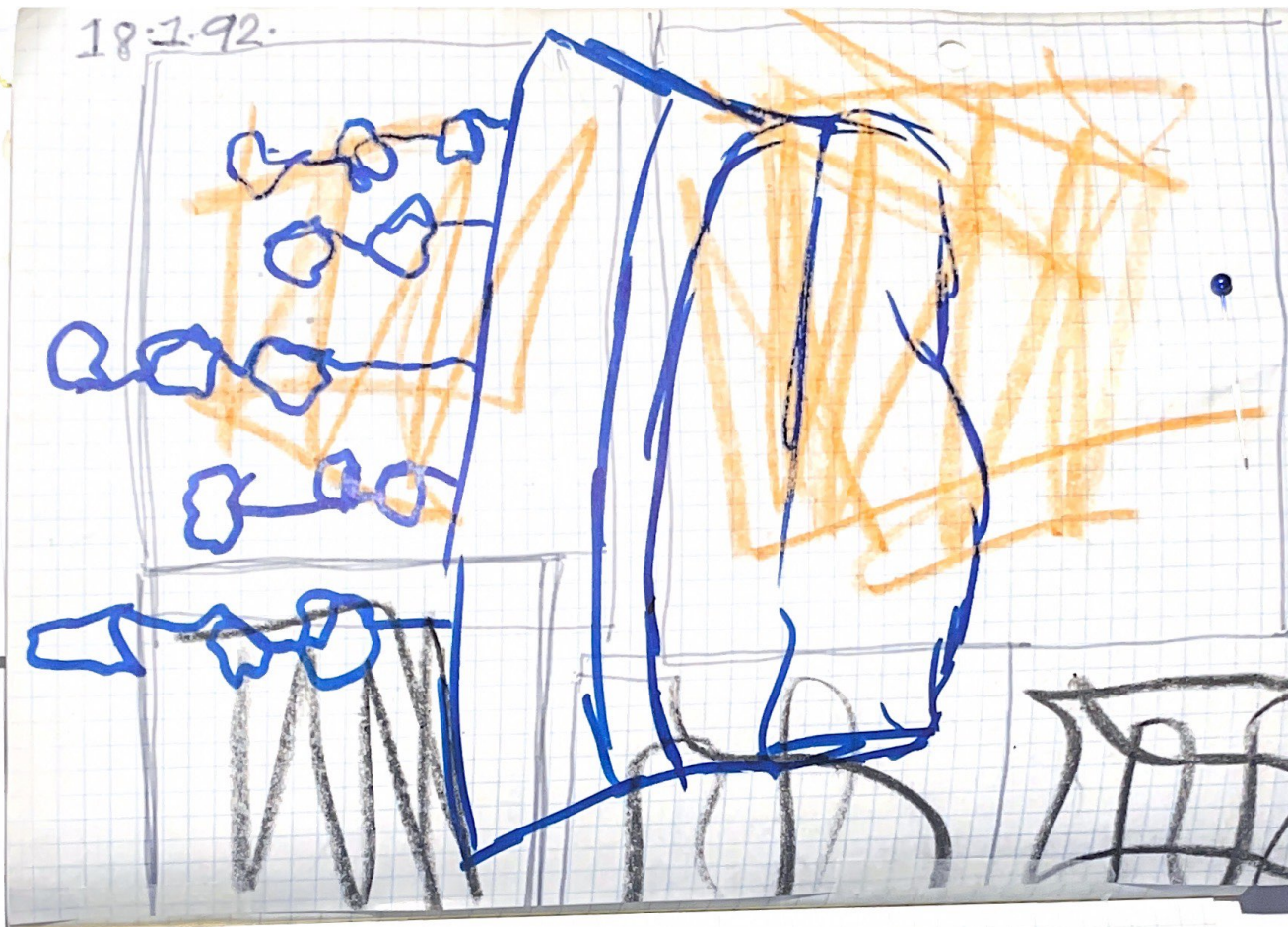
what's been consuming
my life lately?

1 artists not cannolage

- Ana Marieta
- Cecilia Ruedas



18.1.92.



18.1.92.

